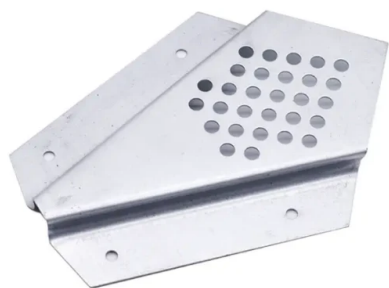


Heavy Duty Metal Corner Bee Escape For Reliable Hive Clearing

Item Number: BE-04



Introduction

Heavy-duty metal corner bee escape for efficient honey harvesting. Durable galvanized steel, one-way channel, stress-free bee clearing. Perfect for commercial apiaries.

[Learn More](#)

Feature	Description / Benefit
Product Name	Heavy-Duty Metal Corner Bee Escape
Material	Corrosion-Resistant Galvanized Steel
Design	Corner-mounted, one-way channel system with perforated grate.
Dimensions	103mm x 65mm
Primary Advantage	Extreme durability for lifetime use; high-efficiency clearing; reduces bee stress.
Functionality	Creates a multi-exit escape board for rapidly and passively clearing bees from honey supers.
Target Application	Commercial apiaries and serious beekeepers requiring robust, professional-grade equipment.